

# VERTICAL ARTICULATED ROBOT **RV30-2257**

## HIGHLY DYNAMIC 6-AXIS ARTICULATED ROBOT FOR PRECISE INDUSTRIAL APPLICATIONS

The REIS **RV30-2257** is an advanced 6-axis articulated robot that offers exceptional precision and dynamics with a nominal payload of 30 kg. The **RV30** is ideal for general handling tasks.

### Top class technology

Equipped with six rotary axes, the **RV30-2257** offers full freedom of movement (6DoF: three translational and three rotational degrees of freedom), making it a versatile solution for complex industrial applications.

### Perfect coordination with the control system

In combination with the advanced REIS ROBOTstar VII robot controller, the **RV30-2257** unfolds its full potential. The precise path control technology of the REIS ROBOTstar VII, in combination with the SINAMICS hardware and control technology, ensures optimum management of the complete servo drive technology, including powerful servomotors.



### Maximum performance thanks to high-quality materials

The REIS RV series sets new standards in its class through the use of precise high-performance gearboxes and mechanics designed for maximum rigidity, natural frequency and damping. The construction in-

cludes innovative material combinations of steel, aluminum, magnesium and carbon fiber composites to ensure maximum stability with minimum weight.



# VERTICAL ARTICULATED ROBOT RV30-2257

## Technical data

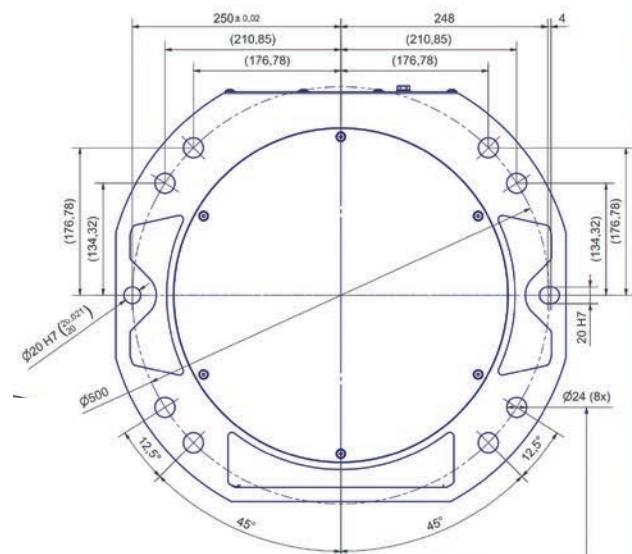
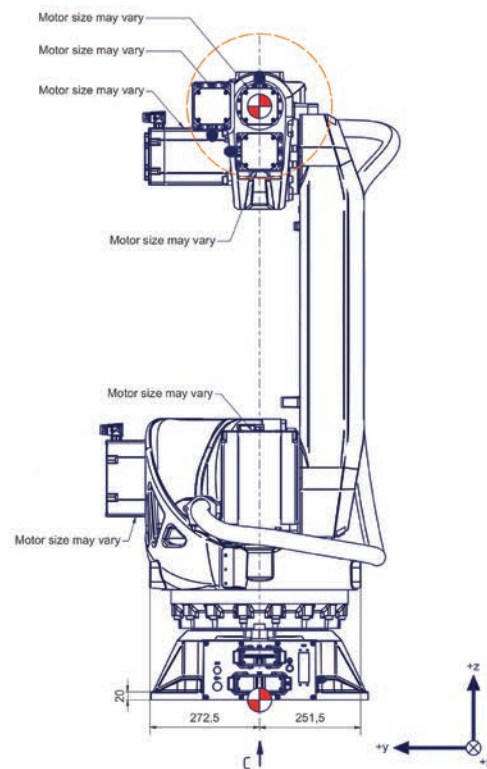
Nominal load capacity	kg	30
Additional load on carousel A1	kg	70
Additional load on arm A3	kg	40
Number of axes		6
Protection class	IP	64
Repeat accuracy	mm	± 0,05
Weight of basic device (without control unit)	kg	417

## Speeds

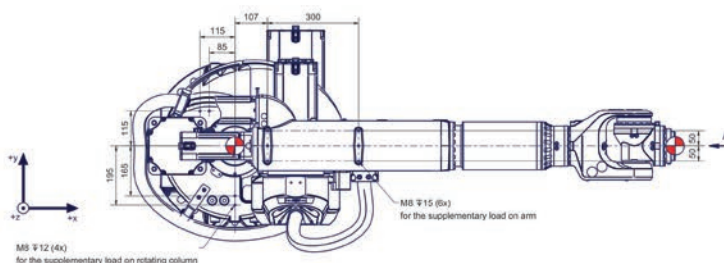
A1	°/s	160
A2	°/s	150
A3	°/s	160
A4	°/s	260
A5	°/s	245
A6	°/s	322

## Swivel range of traversing axis Axis 1 to 6

Swivel range A1	°	± 185
Swivel range A2	°	-90 / +120
Swivel range A3	°	-184 / +67
Swivel range A4	°	± 360
Swivel range A5	°	± 120
Swivel range A6	°	± 360



for screws M20  
(DIN ISO 4014/4017-8.8)  
the tightening torque  
for these screws  
is 390 Nm (in steel frame)

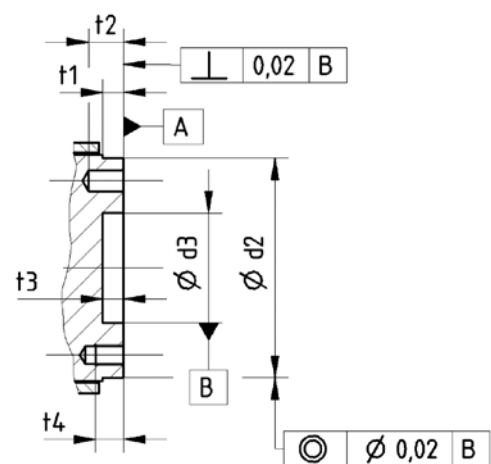
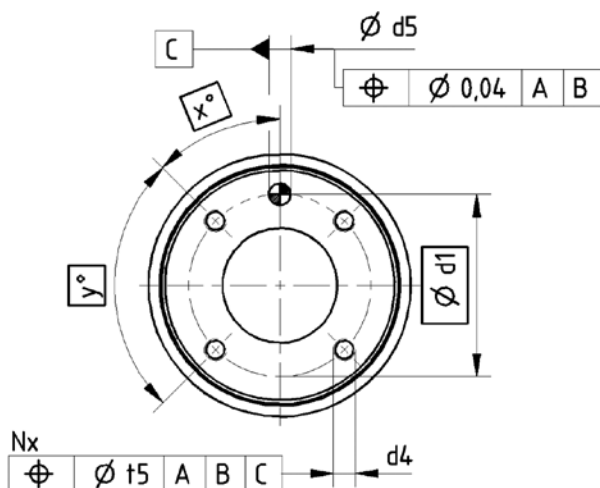
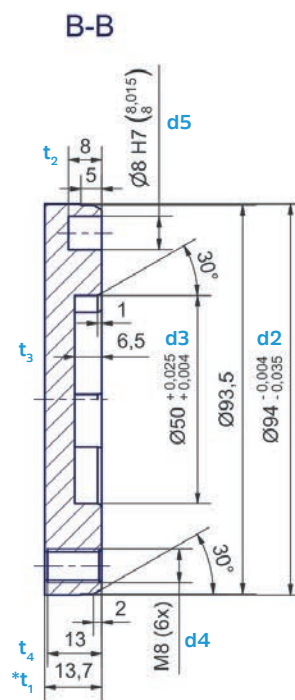
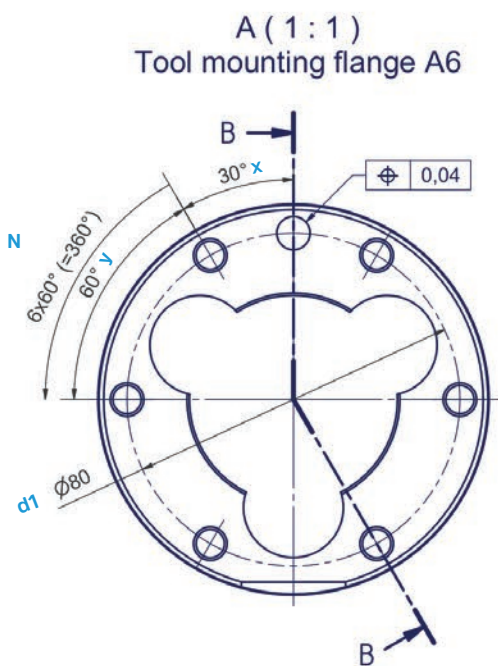


# VERTICAL ARTICULATED ROBOT

## RV30-2257

### MECHANICAL INTERFACE

Type	d <sub>1</sub>	d <sub>2</sub> h8	d <sub>3</sub> H7	d <sub>4</sub>	N	d <sub>5</sub> H7	x	y	t <sub>1</sub>	t <sub>2</sub>	t <sub>3</sub>	t <sub>4</sub>
	mm	mm	mm	mm		mm	°	°	mm	mm	mm	mm
<b>RV30-2257</b>	80	94	50	M8	6	8	30	60	13.7-5	8	6.5	13



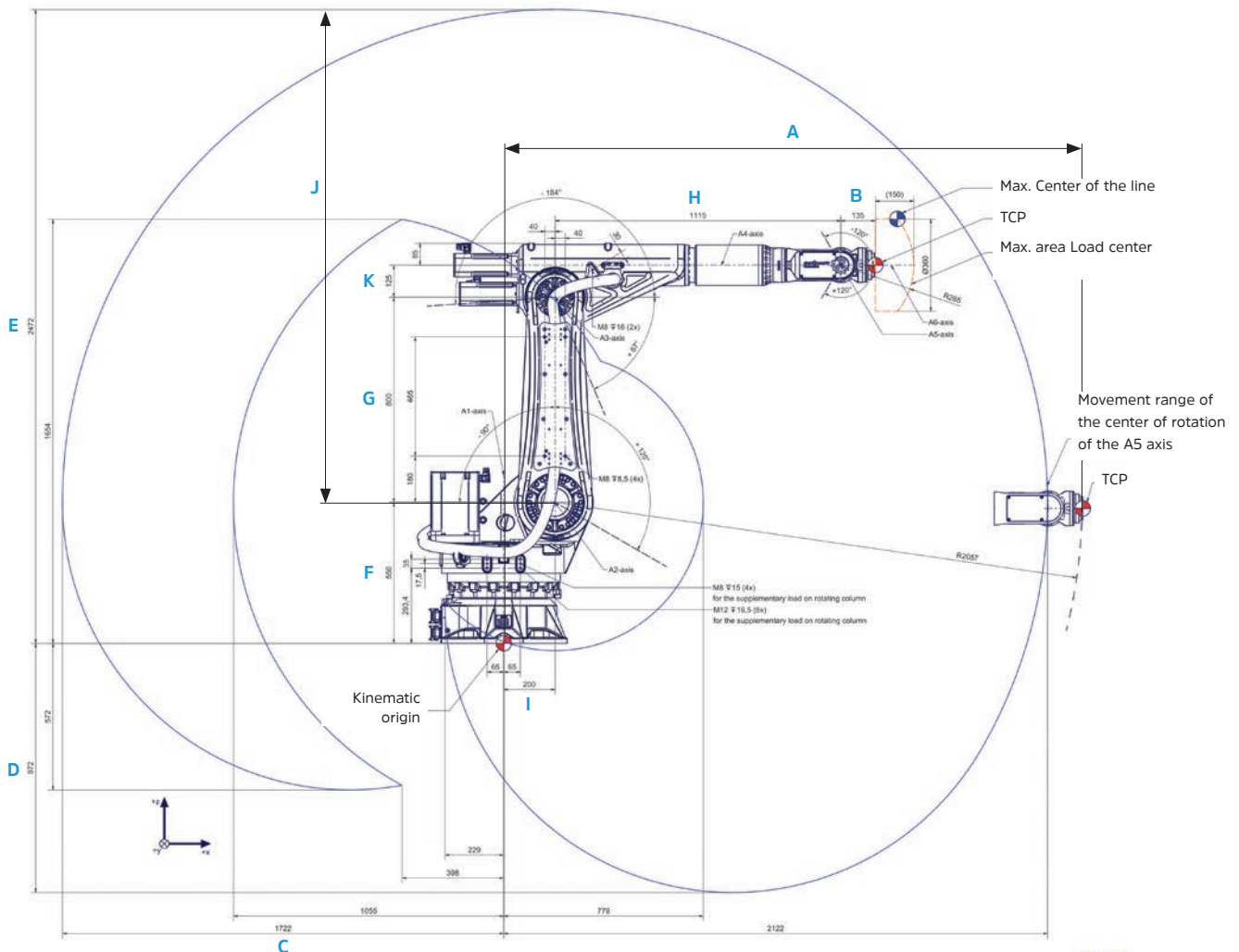
A dowel pin is required in addition to the internal or external centering to fix the position

From the position shown, a rotation range of  $\pm 360^\circ$  is possible.

# VERTICAL ARTICULATED ROBOT

## RV30-2257

### WORKSPACE



### Workspace

A	mm	2,257	G	mm	800
B	mm	135	H	mm	1,115
C	mm	1,722	I	mm	200
D	mm	972	J	mm	1,922
E	mm	2,472	K	mm	125
F	mm	550			

For further information please contact us under:

**Reis Robotics GmbH & Co. KG**  
 Walter-Reis-Straße 1  
 63785 Obernburg / Germany  
 Phone +49 6022 503-0

Statements on quality and usability of the products are no warranty of properties, but are for information only. The relevant object of the contract is decisive for the scope of our supply and services. Some illustrations may contain optional equipment that is not included in the standard scope of supply.

Technical data and illustrations are not binding for deliveries. Subject to changes.

