

VERTICAL ARTICULATED ROBOT **RV150-2390**

HIGHLY DYNAMIC 6-AXIS ARTICULATED ROBOT FOR PRECISE INDUSTRIAL APPLICATIONS

The REIS **RV150-2390** is an advanced 6-axis articulated robot that offers exceptional precision and dynamics with a nominal payload of 150 kg. The **RV150** is ideally suited for testing and measuring tasks, as well as milling, handling and laser applications.

For extremely high-precision tasks in the high-end sector, the mechanics can also be equipped with secondary encoders.

Top-class technology

Equipped with six rotary axes, the **RV150-2390** offers full freedom of movement (6DoF: three translational and three rotational degrees of freedom), making it a versatile solution for complex industrial applications.

Perfect coordination with the control system

In combination with the advanced REIS ROBOTstar VII robot controller, the **RV150-2390** unfolds its full potential. The precise path control technology of the REIS ROBOTstar VII, in combination with the SINAMICS hardware and control technology, ensures optimum management of the complete servo drive technology, including powerful servomotors.



Maximum performance thanks to high-quality materials

The REIS RV series sets new standards in its class through the use of precise high-performance gearboxes and mechanics designed for maximum rigidity, natural frequency and damping. The construction in-

cludes innovative material combinations of steel, aluminum, magnesium and carbon fiber composites to ensure maximum stability with minimum weight.



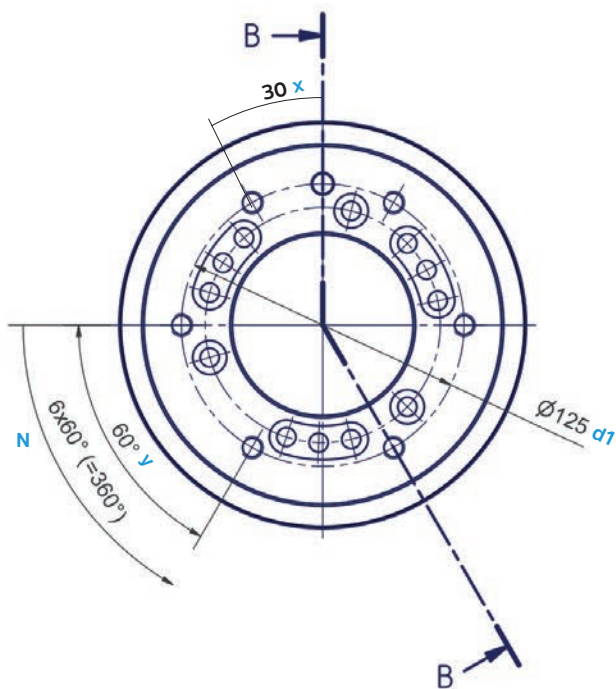
VERTICAL ARTICULATED ROBOT

RV150-2390

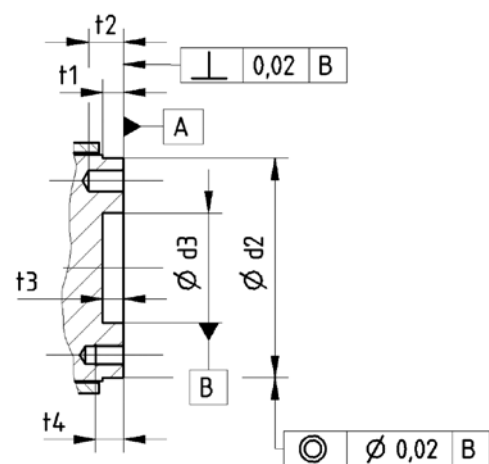
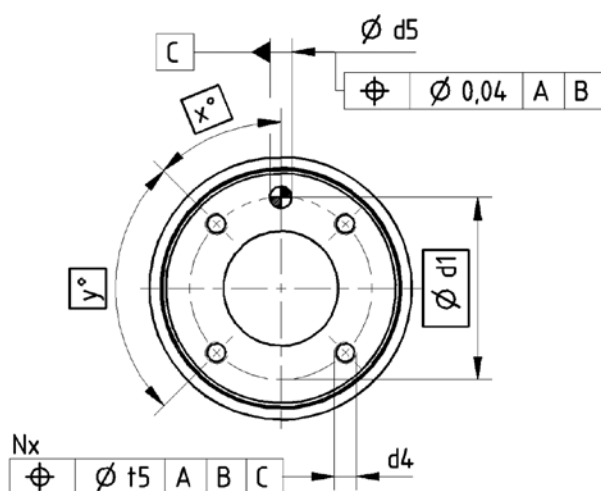
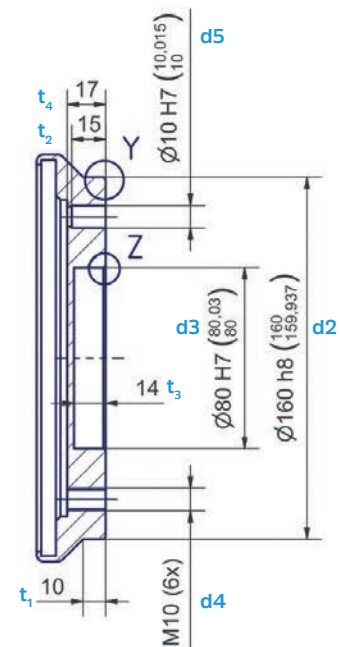
MECHANICAL INTERFACE

Type	d ₁	d ₂ h ₈	d ₃ H ⁷	d ₄	N	d ₅ H ⁷	x	y	t ₁	t ₂	t ₃	t ₄
	mm	mm	mm	mm		mm	°	°	mm	mm	mm	mm
RV150-2390	125	160	80	M10	6	10	30	60	10	15	14	17

A (1:2)
Tool mounting flange A6



B-B



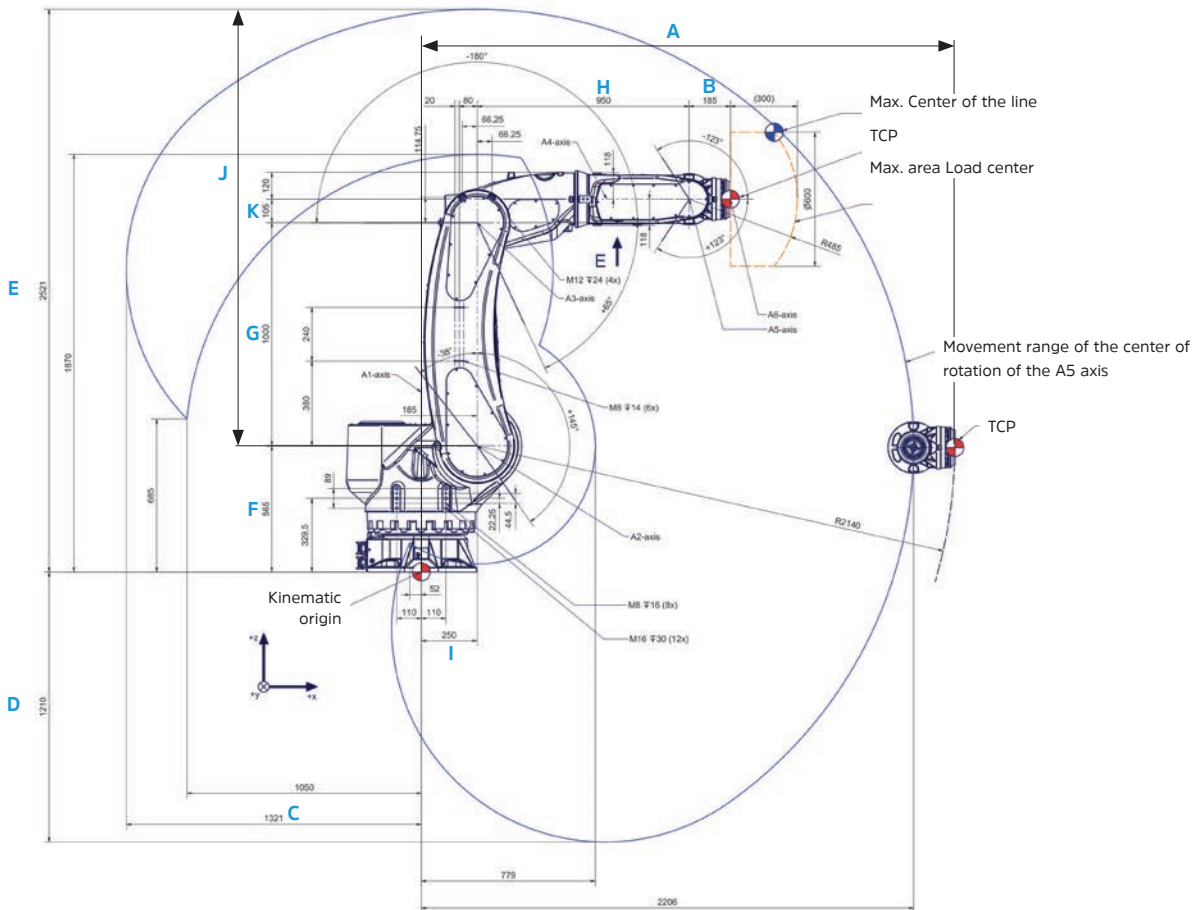
A dowel pin is required in addition to the internal or external centering to fix the position

From the position shown, a rotation range of $\pm 360^\circ$ is possible.

VERTICAL ARTICULATED ROBOT

RV150-2390

WORKSPACE



Workspace

A	mm	2,390	G	mm	1,000
B	mm	185	H	mm	950
C	mm	1,321	I	mm	250
D	mm	1,210	J	mm	1,956
E	mm	2,521	K	mm	105
F	mm	565			

For further information please contact us under:

Reis Robotics GmbH & Co. KG
 Walter-Reis-Straße 1
 63785 Obernburg / Germany
 Phone +49 6022 503-0

Statements on quality and usability of the products are no warranty of properties, but are for information only. The relevant object of the contract is decisive for the scope of our supply and services. Some illustrations may contain optional equipment that is not included in the standard scope of supply.

Technical data and illustrations are not binding for deliveries. Subject to changes.